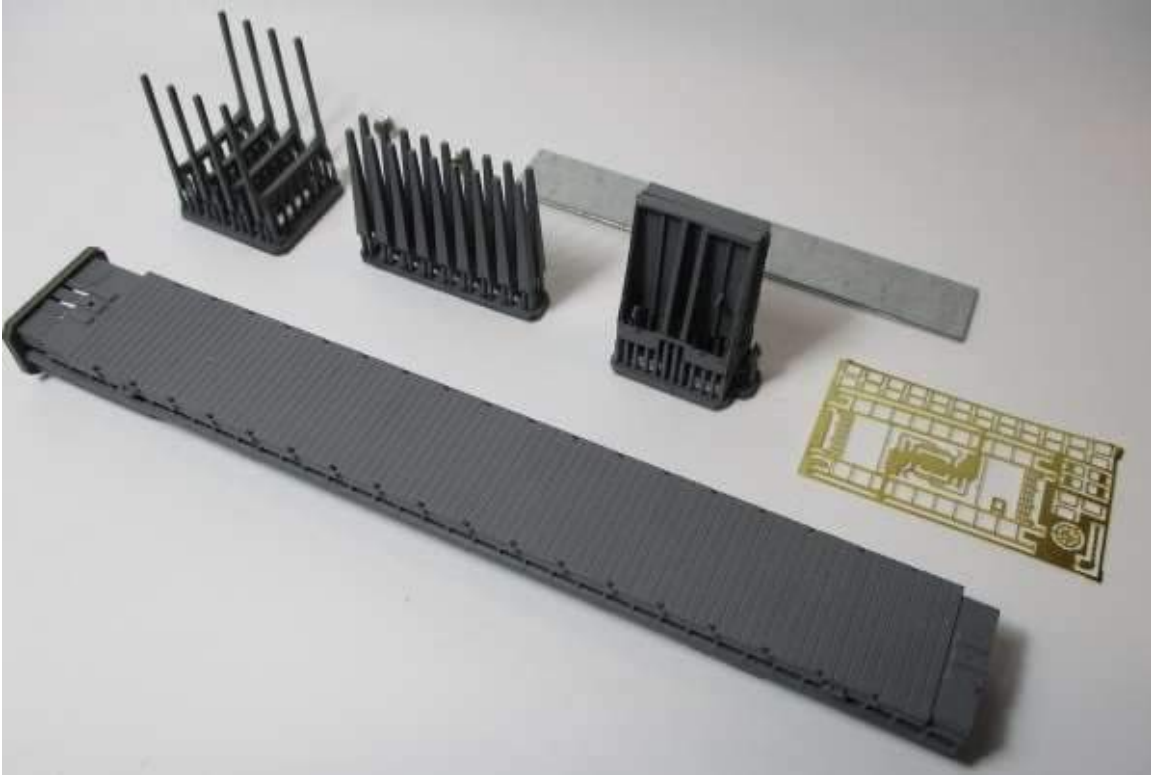


N Scale 71' Bulkhead Flat Car Instructions

These parts are in the kit: (You may not have log bunks or centerbeam details depending on the kit you ordered.)



Please inspect the parts before starting this kit. There are some parts that are easily damaged if removed from the sprues or frets incorrectly.

Most of the holes for installing parts are already in place. You may need to open up a couple of them with a #79 bit, particularly the grab iron holes in the top of the bulkheads.

You will need the following tools and supplies to complete this kit:

Micro Trains 1016 long shank couplers in boxes

Micro Trains #1036 roller bearing trucks with low profile wheelsets

Pin vise with #79, #66, and #46 bits

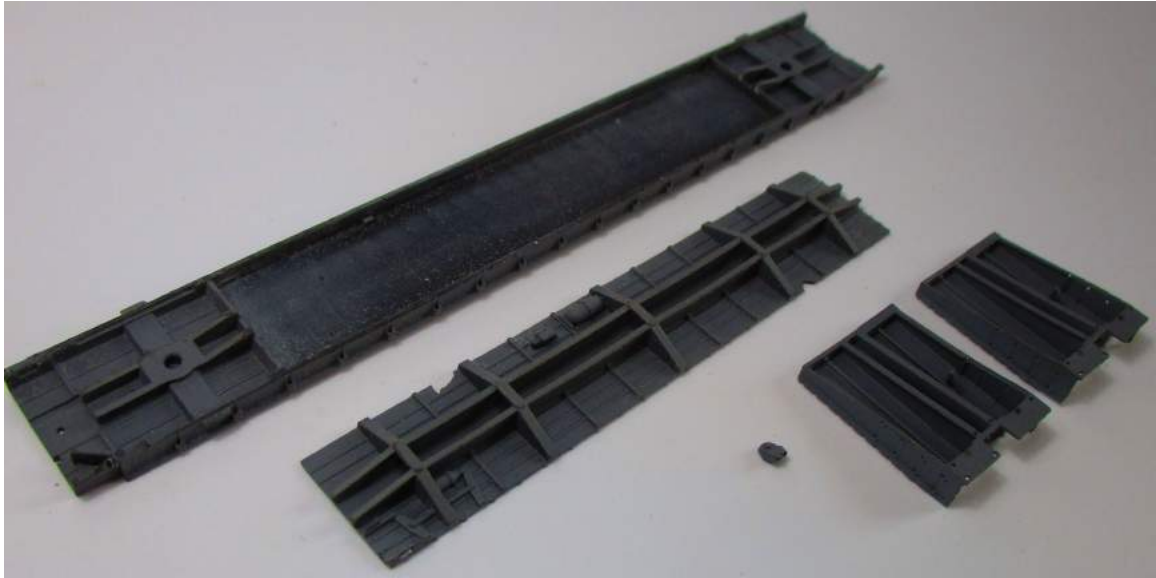
X-Acto knife with #11 and chisel blades

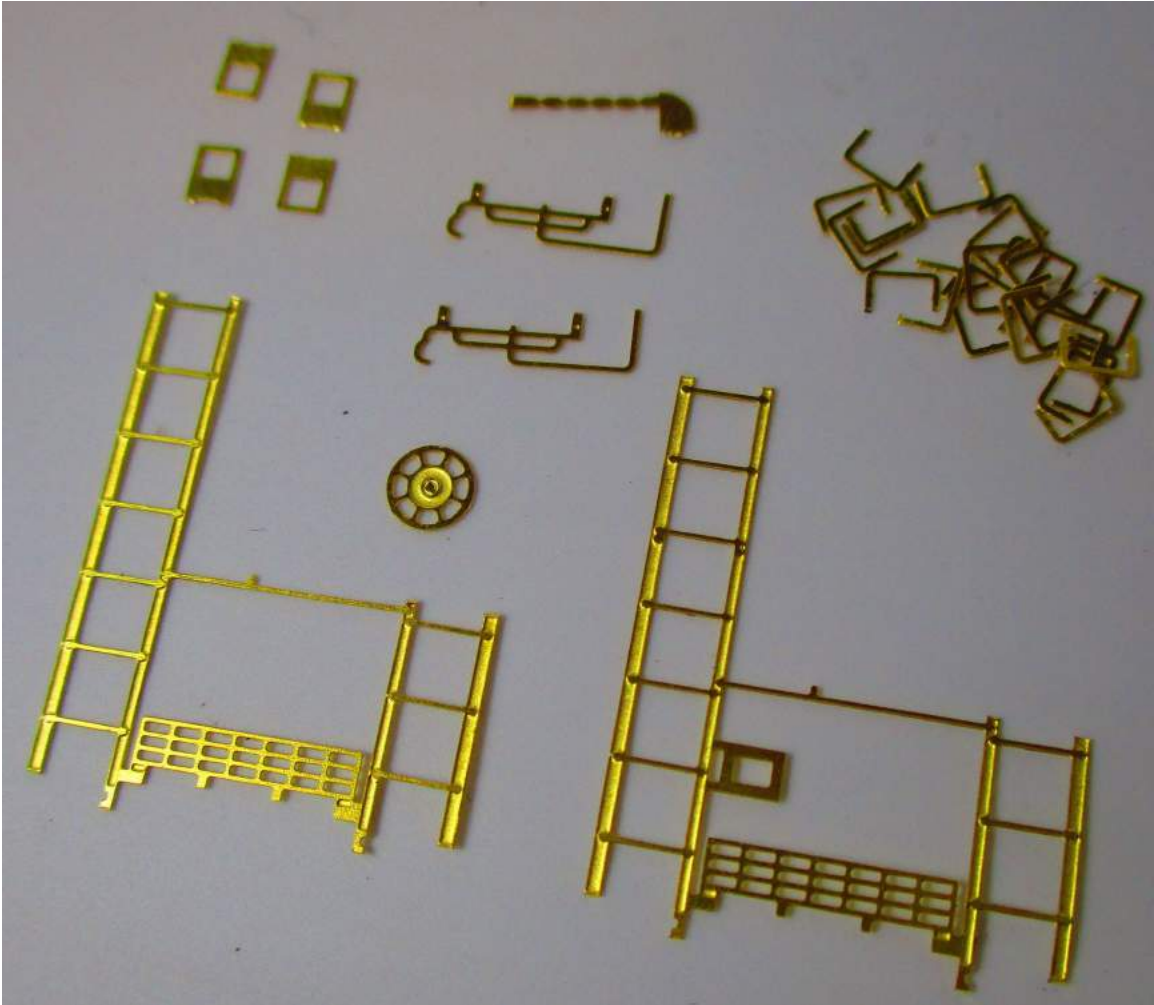
small piece of plexiglass

CA glue

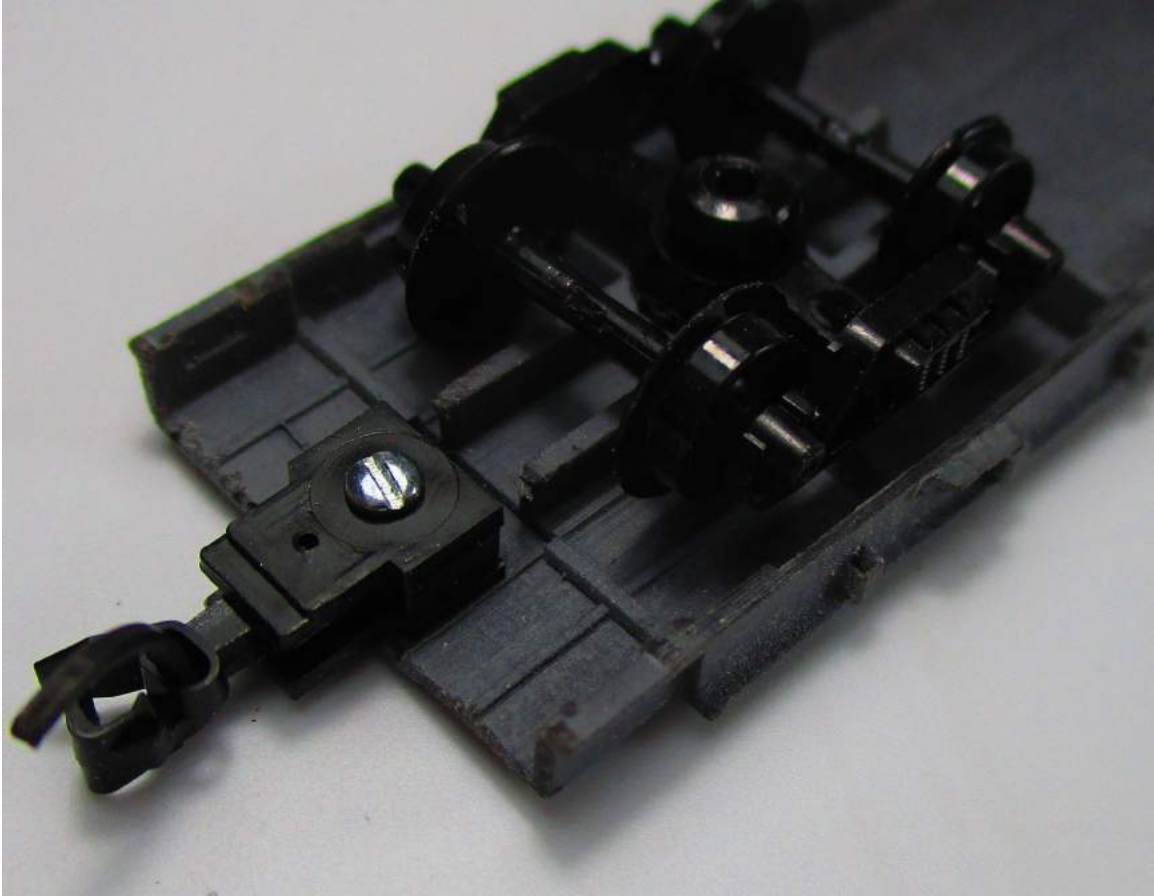
small Phillips screwdriver

1. Start by familiarizing yourself with the parts in the kit.
2. Remove the parts from the sprues carefully, using your XActo #11. Remove the metal parts from the frets using your chisel blade, on a piece of plexiglass. Pay close attention to what the parts should look like when removed from the fret, so you don't cut off too much material.





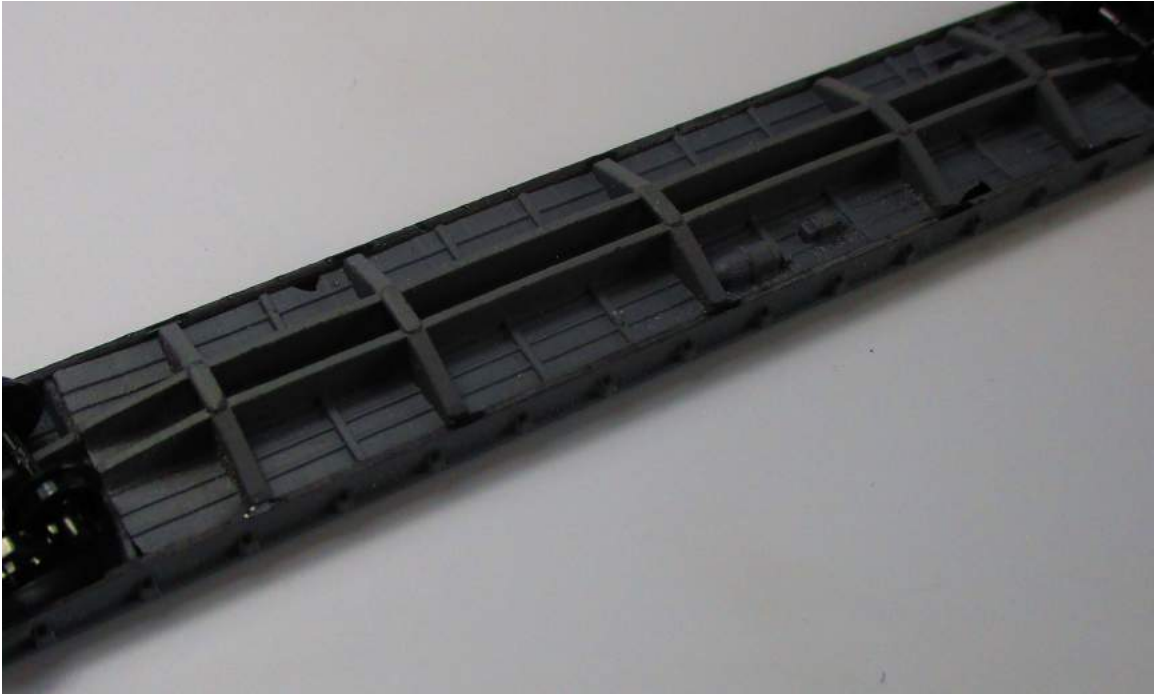
3. Clean out the bolster holes #46. You can use either the screws provided or Micro Trains pins in the same holes. Drill the coupler holes #66. Screw the trucks and couplers in place. You can trim down the coupler screws, or not. Add a dab of glue to the coupler screw to keep it from going loose.



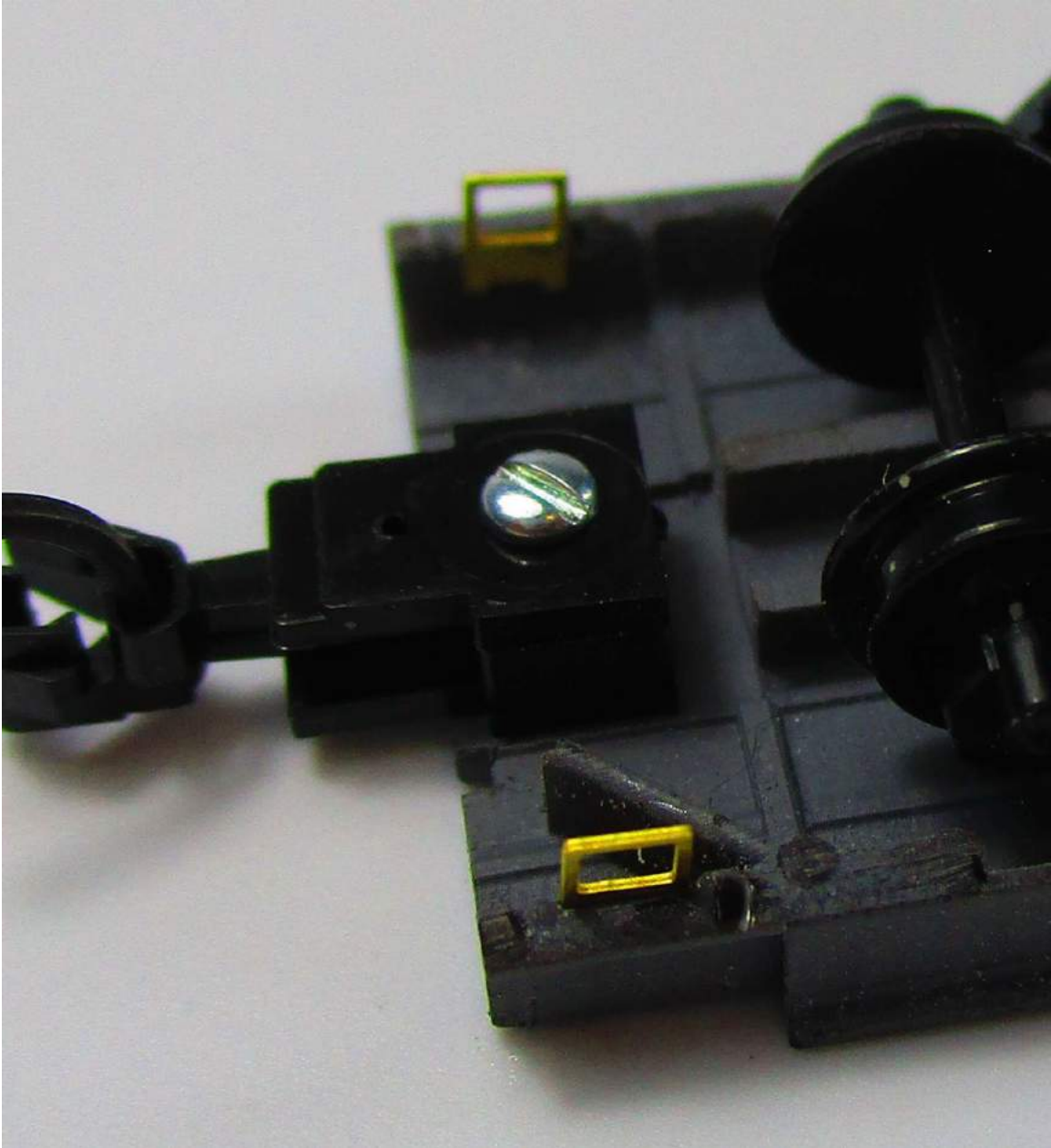
4. Test fit the underframe into the body and adjust by sanding as necessary. You can see on my parts I wasn't careful and had a couple chips in my underframe. A good reason to go slow and carefully.

5. Glue the weights into the body, then the underframe to the weights. Make sure the brake lever assembly is at the same end of the body as the notch for the handbrake chain, right at the end of the car.





6. Glue the stirrup steps into the recesses for them in the body.



3. Now move on to the bulkheads. Bend the end walkways down so the pins project backwards. Glue these parts in place. (The bulkheads are identical.) Be careful while doing this bending and take your time, as the etched parts are delicate. I used a toothpick to apply some glue to the etched parts, then stuck them in place. You can see I already pinned the bottom of the ladder assemblies to the bulkhead with grab irons. Don't install these until later.

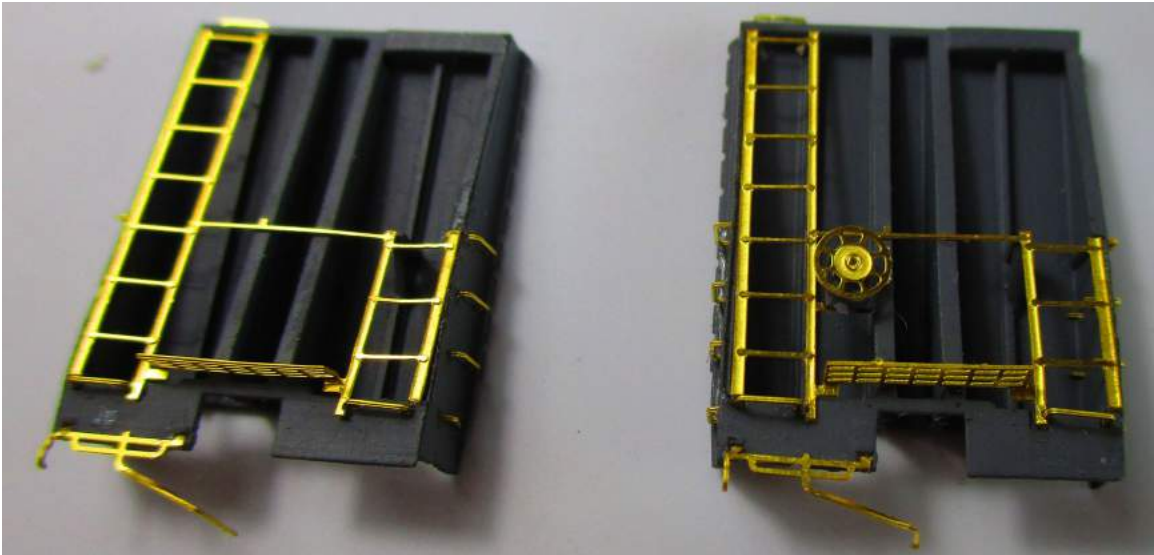


4. Glue the handbrake housing to the bracket etched to the B end ladder.

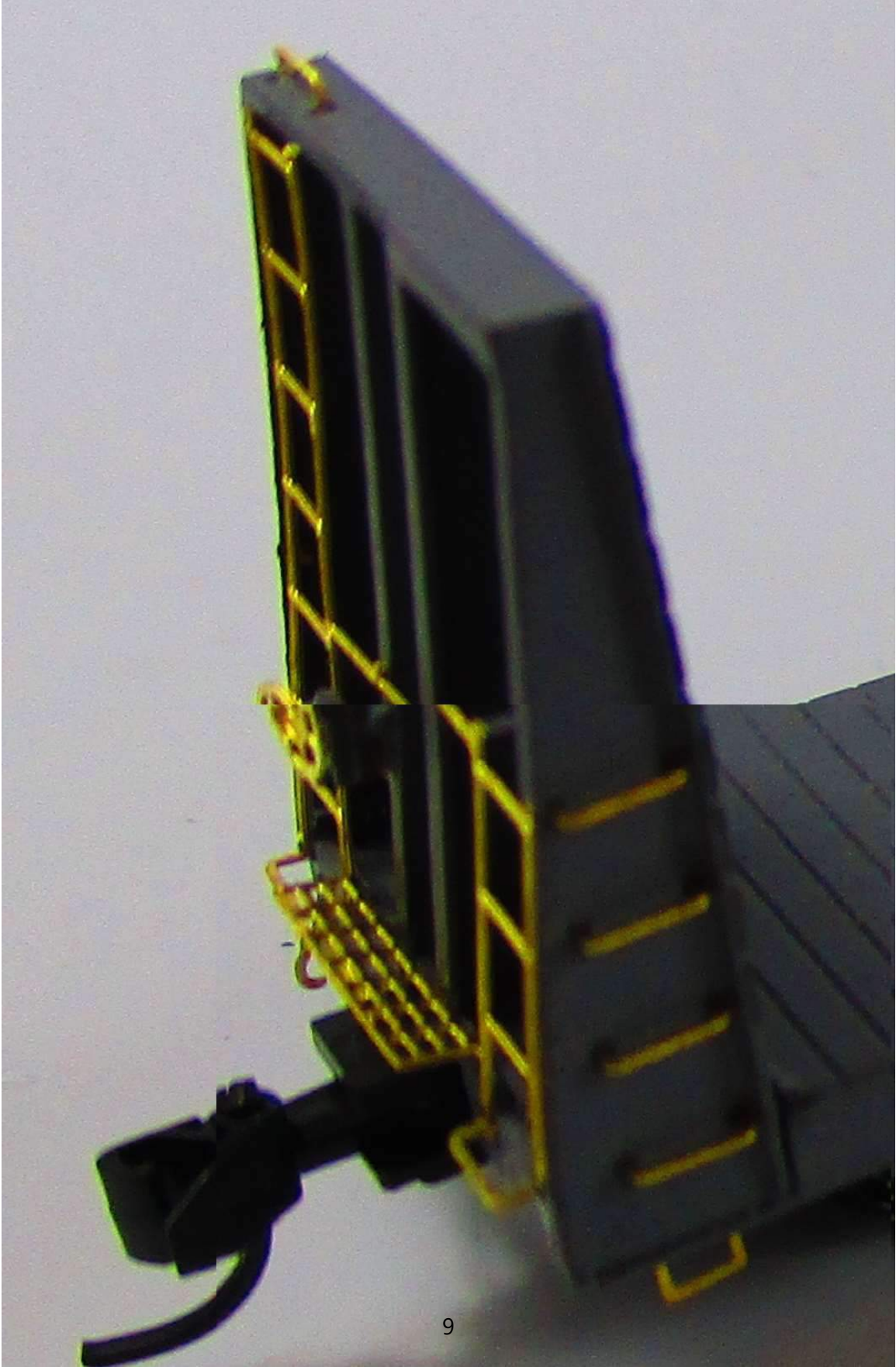
5. Bend the cut levers to shape and install them.



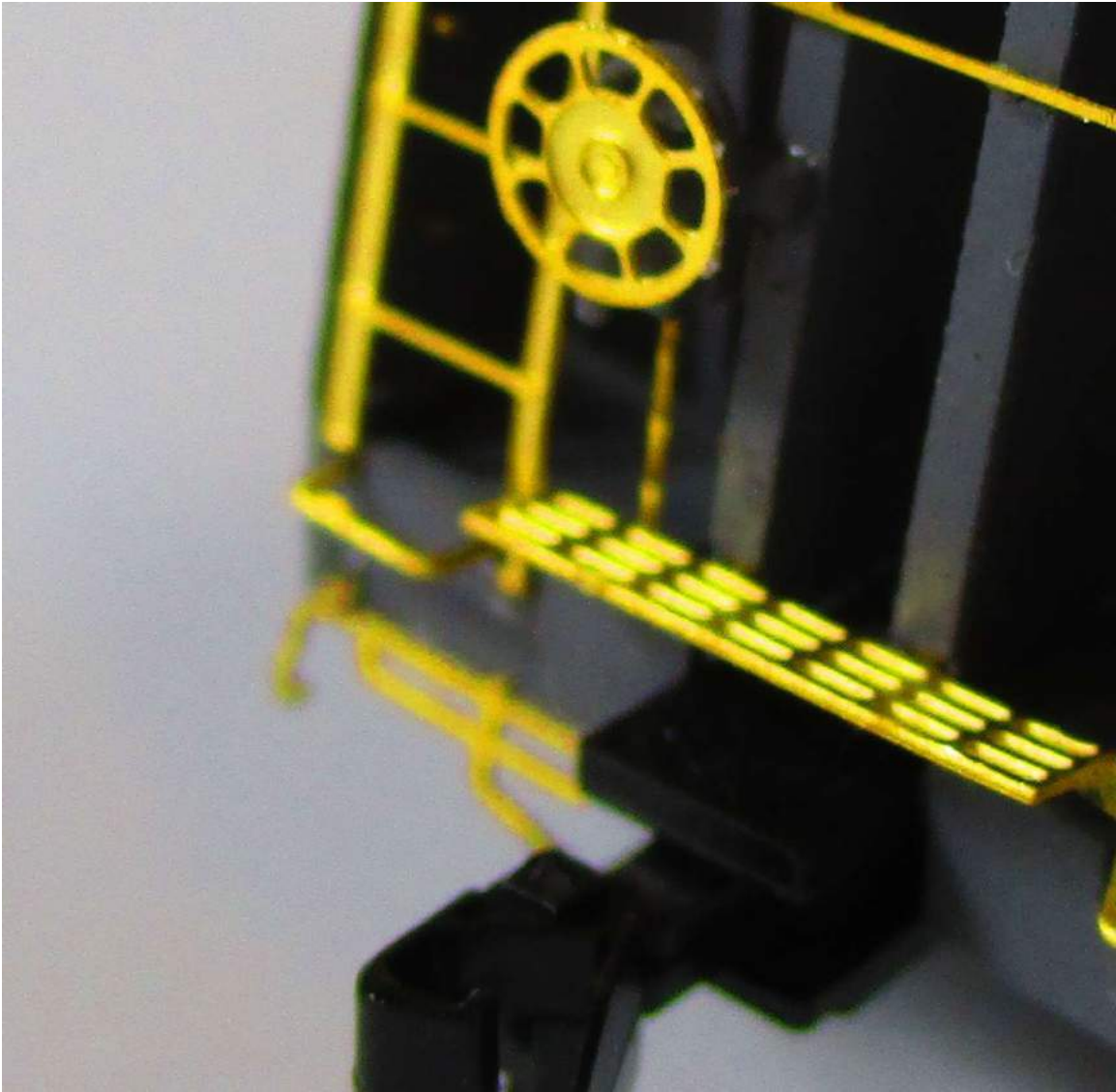
6. Glue the grab irons in place on the bulkheads. When installing the two on each end sill and the bottom ones on the sides, I trimmed the legs to make sure they wouldn't interfere with the bulkhead installation on the body.



Glue the bulkheads to the body, ensuring they are straight with a square. Before gluing, make sure that they are fully seated as well. Remember- the bulkhead with the brake wheel goes on the end of the car with the brake lever assembly and small notch in the end.



8. Glue in the handbrake chain, through the notch in the end sill, and up behind the handbrake housing.



9. If you are building a model with a centerbeam conversion or log bunks, install those parts now.

I hope you had a good time putting this kit together. Please drop us an email through www.briggsmodels.ca for product suggestions or for feedback on this kit.